

OFFICIAL RULES

ODYSSEY²

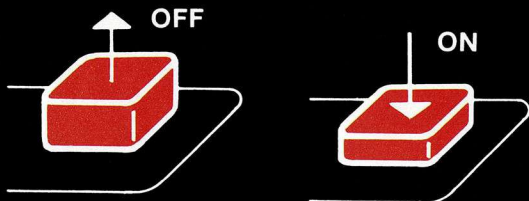


MONKEYSHINES!

**Computerized monkeys! Unlimited action!!
Trillions of combinations!!! You'll go ape!!!!**

IMPORTANT!

Always be sure that the power to your Odyssey² console is turned off before inserting a game cartridge. This protects the electronic components and extends the life of the unit.



TO BEGIN:

- 1 Insert the cartridge into the slot of the Odyssey² console with the label side of the cartridge facing the alpha-numeric keyboard.
- 2 Turn on the power by pressing the power button of the console. SELECT GAME will appear on your TV screen. If it does not, press the RESET key on the alpha-numeric keyboard.

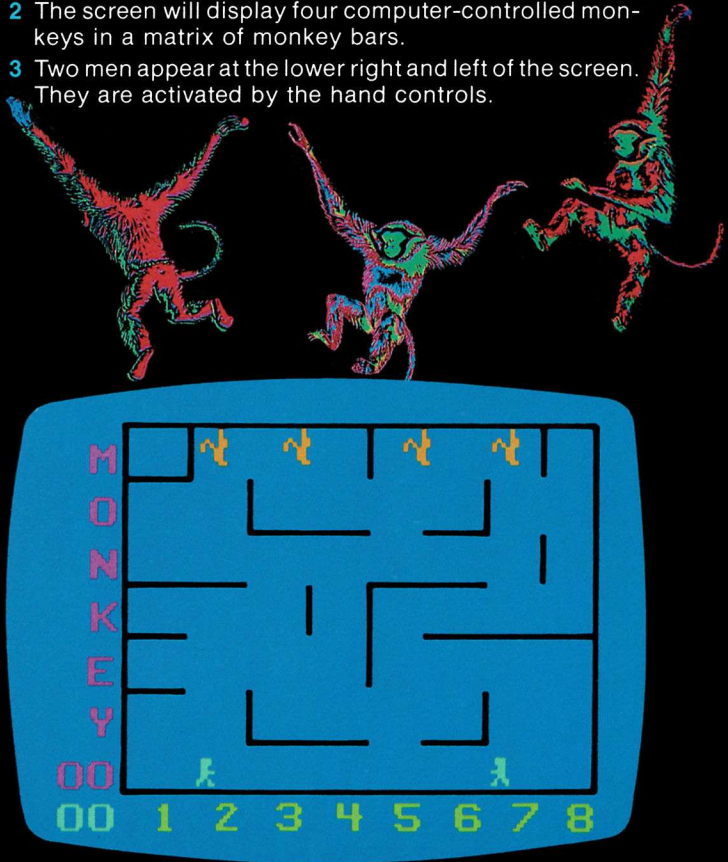


On-screen colors may vary according to individual TV's color adjustments.

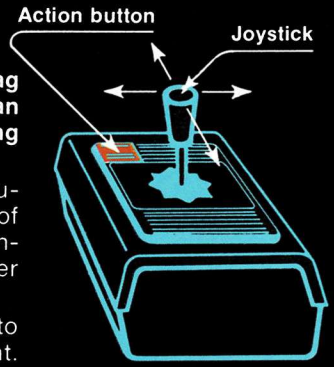
MONKEY TAG!

(1 or 2 players)

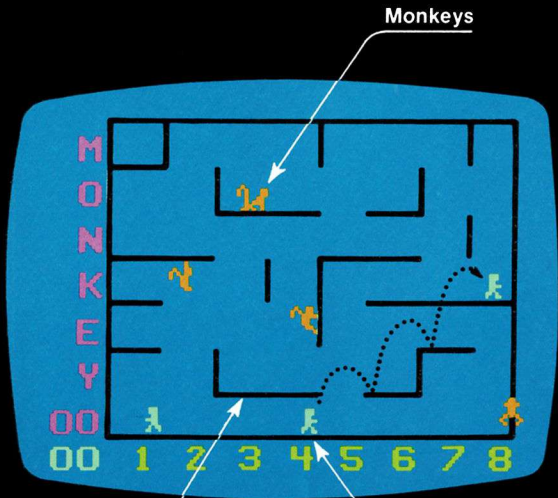
- 1 Press 0 on the numeric section of the Odyssey² keyboard.
- 2 The screen will display four computer-controlled monkeys in a matrix of monkey bars.
- 3 Two men appear at the lower right and left of the screen. They are activated by the hand controls.



- 4 The object of the game is to tag as many monkeys as you can with your man—without getting tagged back.
- 5 The left hand control maneuvers the man at the lower left of the screen. The right hand control activates the man at the lower right of the screen.
- 6 Push the joystick to the right to make your man go to the right. Push the joystick to the left to make your man go to the left.
- 7 Push the joystick forward and press the action button to make your man jump up to the next highest level of monkey bars. Push the joystick forward at an angle and press the action button to make your man jump on a



Hand control

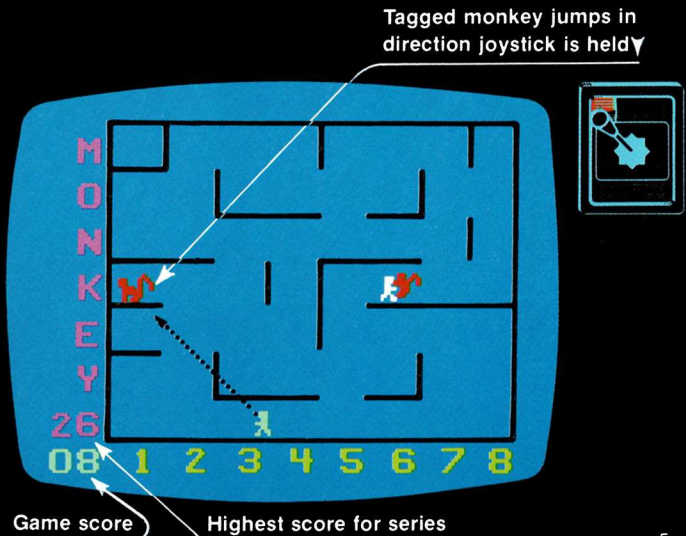


Monkey bars

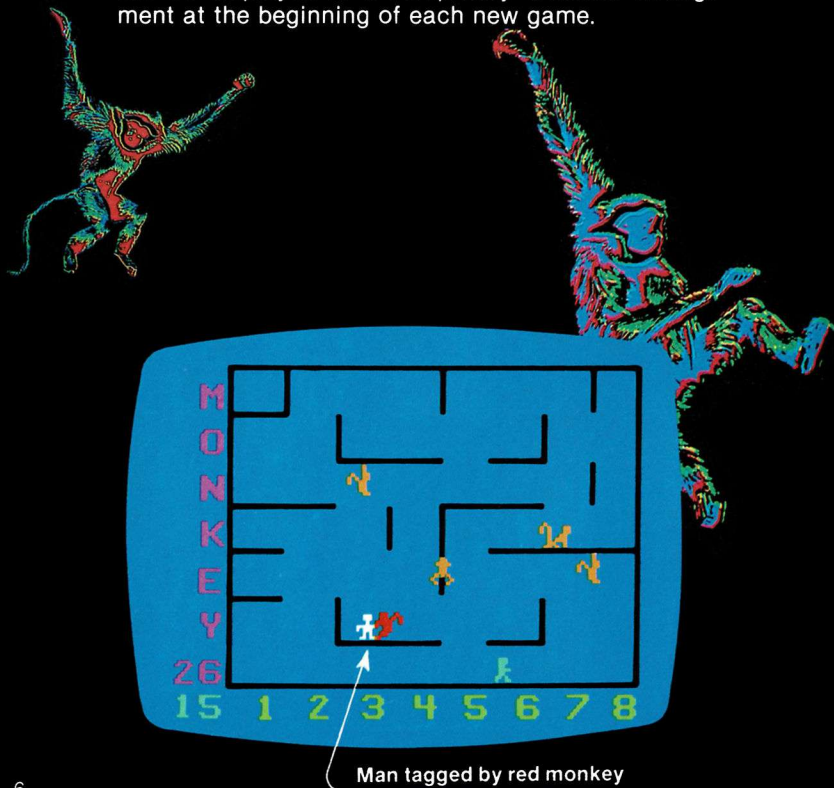
Man jumping monkey bars, one level at a time

diagonal. The men can only jump up one level of monkey bars at a time. One man can give the other a boost. If one jumps on the head of the other, he can reach the next highest level of monkey bars on his next jump.

- 8 A man tags a monkey by catching it and pressing the action button. The tagged monkey will jump away in the direction the joystick is held at the instant the action button is pressed. If you catch a monkey and delay pressing the action button, the monkey will jump away without a tag being scored.
- 9 Players score one point for every monkey tagged. The game score appears at the lower left of the screen. The highest score in a series of games appears just above the game score. If both hand controls are being used, the men play as a team and the score displays their total points. You are not competing with another player—you are competing with the computer.



- 10 When a monkey is tagged, it will turn red and try to tag one of the men. If a man is tagged by a red monkey, he will freeze in position and is out of the game.
- 11 The higher the game score, the longer the monkeys will stay red and the harder it will be for the men to avoid getting caught.
- 12 A new game will start automatically when both men have been tagged by red monkeys. The monkey bars will be displayed in a completely different arrangement at the beginning of each new game.



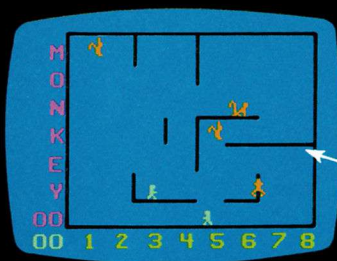
- 13** Every game automatically starts at the first skill level. When ten points have been scored, the computer will automatically change to the next highest skill level to provide greater challenge. The third skill level will be presented when 30 points have been scored. The monkeys stay red longer and are more difficult to evade with every increase in skill level.
- 14** If you wish to play at the second skill level before scoring ten points, press the + key once. To play at the third skill level, press the + key twice.



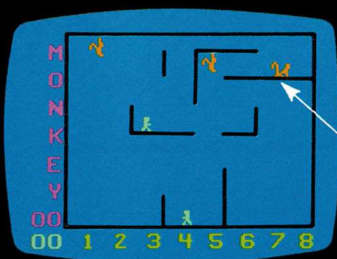
TAILSPIN!

(1 or 2 players)

- 1 Press RESET.
- 2 Press 0 on the numeric section of the keyboard.
- 3 Press R (for ROTATION) on the alphabet section of the keyboard.
- 4 The monkey bars will rotate upwards to a new position every few seconds. This calls for a completely different playing strategy. You will have to anticipate the next position of the monkey bars and adjust your movement and timing accordingly.
- 5 Press S (for STOP) on the alphabet section of the keyboard to stop the rotation of the monkey bars. You can start or stop the rotation of the monkey bars at any time during the game.



Monkey bars will continuously rise up...

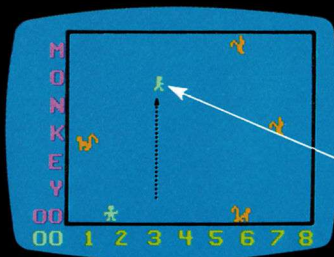


...by pressing "R" (for rotate) on the keyboard

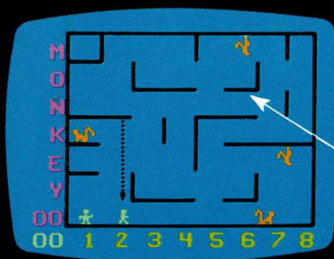
SHUTEYE!

(1 or 2 players)

- 1 Press RESET.
- 2 Press 0 on the numeric section of the keyboard.
- 3 Press I (for INVISIBLE) on the alphabet section of the keyboard. The monkey bars will disappear.
- 4 You are now playing blindfolded—but the monkeys are not.
- 5 The monkey bars will reappear momentarily any time one of the men is falling. They will also reappear if one of the men stands on the head of the other.
- 6 Press V (for VISIBLE) to make the monkey bars reappear.



Player must move thru invisible monkey bars to try and tag monkeys

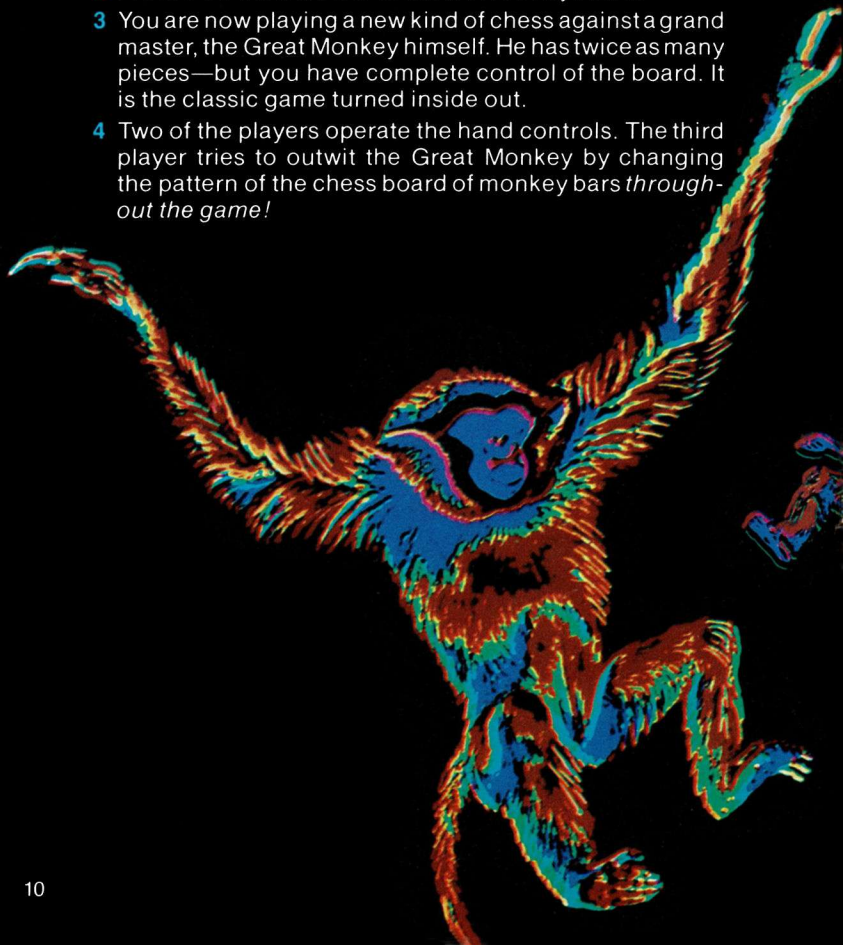


Bars will reappear when man is falling or if one man stands on the head of the other

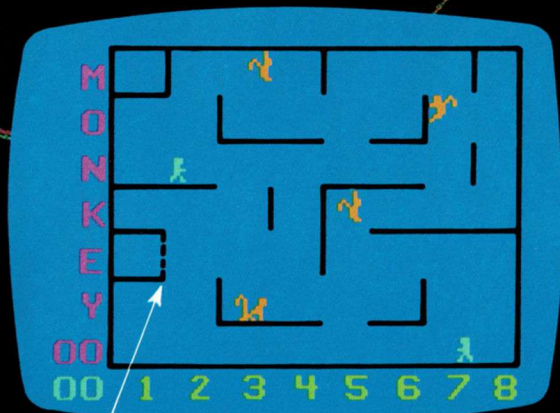
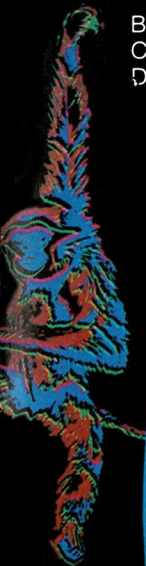
MONKEY CHESS!

(3 players)

- 1 Press RESET.
- 2 Press 0 on the numeric section of the keyboard.
- 3 You are now playing a new kind of chess against a grand master, the Great Monkey himself. He has twice as many pieces—but you have complete control of the board. It is the classic game turned inside out.
- 4 Two of the players operate the hand controls. The third player tries to outwit the Great Monkey by changing the pattern of the chess board of monkey bars *throughout the game!*

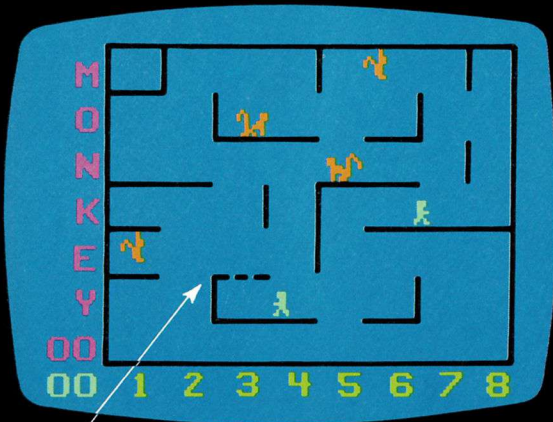


- 5 To remove a vertical monkey bar:
 - A. Locate the bar by its letter and number coordinates.
 - B. Press the number on the numeric section of the keyboard.
 - C. Press the letter on the alphabet section of the keyboard.
 - D. Press CLEAR. The vertical bar will disappear.
- 6 To add a vertical monkey bar:
 - A. Locate the coordinates for the position in which you wish to insert the monkey bar.
 - B. Press the number.
 - C. Press the letter.
 - D. Press ENTER.



To remove vertical monkey bar player has pressed "1", then "E" and "clear" on the keyboard

- 7 To delete a horizontal monkey bar:
 - A. Locate the bar by its letter and number coordinates.
 - B. Press the letter.
 - C. Press the number.
 - D. Press CLEAR.
- 8 To add a horizontal monkey bar:
 - A. Locate the coordinates of the position in which you wish to place the horizontal monkey bar.
 - B. Press the letter.
 - C. Press the number.
 - D. Press ENTER.
- 9 In summary, pressing the letter first will affect horizontal bars. Pressing the number first will affect the vertical bars.



To remove horizontal monkey bar player has pressed "E," then "3" and "clear" on the keyboard

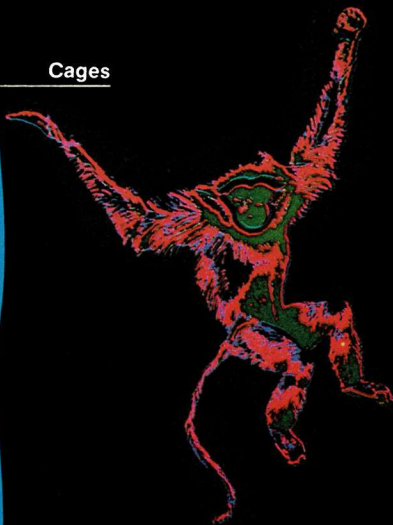
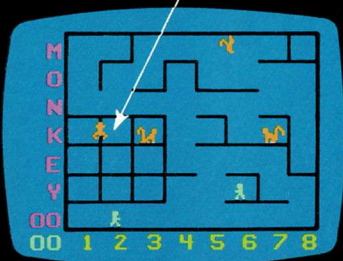
10 The player controlling the keyboard masterminds the strategy it takes to beat the Great Monkey at his own game.

"Ladders" can be built to help the men get quickly to any part of the screen. Ladders can also be "unbuilt" to prevent the monkeys from using them.

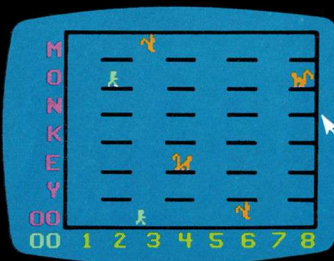
"Cages" can be built to temporarily delay tagged monkeys from tagging the men.



Cages

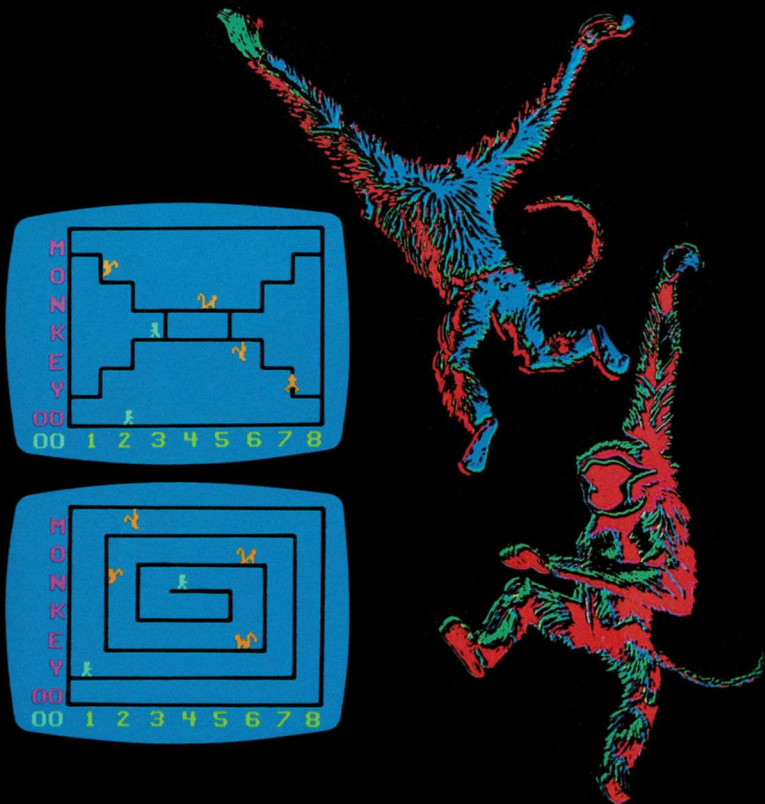


Ladders



Hint. Pretend that the cage has a door and memorize its coordinates. One of the men tags a monkey and uses the joystick to release him into the cage. The player using the keyboard has already preset the "door" coordinates and is ready to press ENTER. The completely closed cage will delay a tagged red monkey from tagging one of the men.

- 11 The player controlling the keyboard can also insert obstacle bars in the path of pursuing red monkeys.



BANANAS!

(For professionals only. 3 players.)

- 1 Press RESET.
- 2 Press 0 on the numeric section of the keyboard.
- 3 Insert the keyboard entries for Tailspin, Shuteye and Monkey Chess in various combinations. You will be using all your firepower to confuse the monkeys and achieve high scores under very exotic conditions.
- 4 The challenge range will escalate from utter confusion to total chaos!

RECAP OF KEYBOARD ENTRY CODES:

TAILSPIN!

R (Rotate) S (Stop)

SHUTEYE!

I (Invisible) V (Visible)

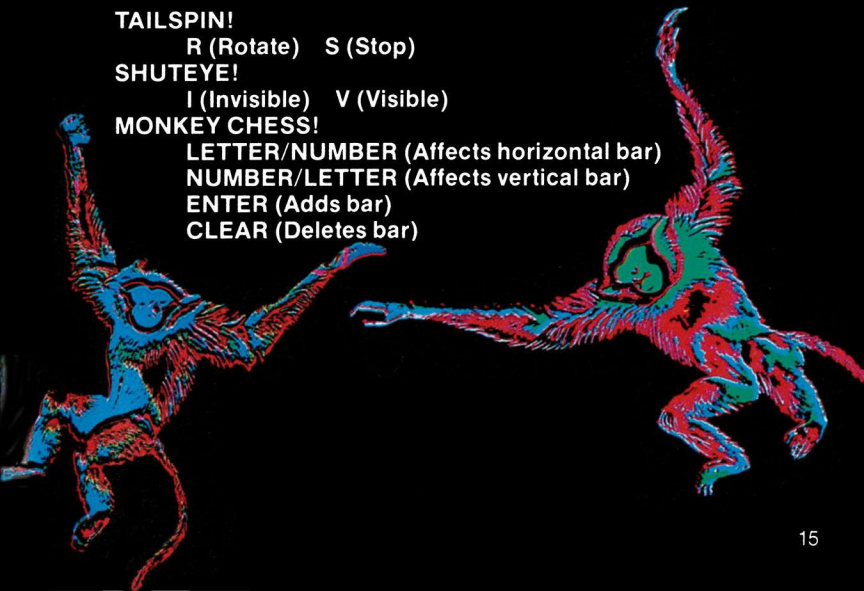
MONKEY CHESS!

LETTER/NUMBER (Affects horizontal bar)

NUMBER/LETTER (Affects vertical bar)

ENTER (Adds bar)

CLEAR (Deletes bar)



MONKEYSHINES!

**Computerized monkeys! Unlimited action!!
Trillions of combinations!!! You'll go ape!!!!**